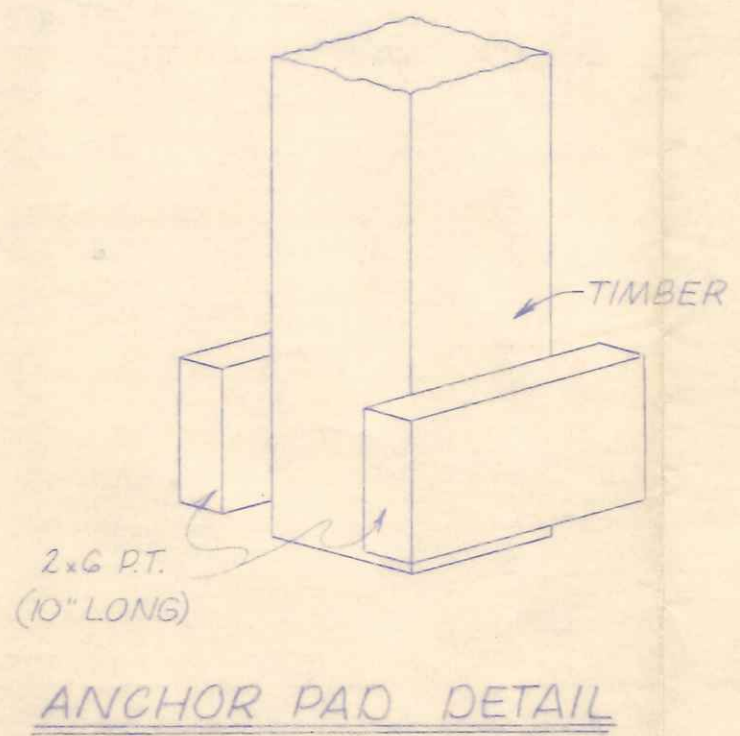


PLAN
Scale: 1/8" = 1'-0"

NOTES:

1. DESIGN LOAD = 25 p.s.f. LIVE + 5 p.s.f. DEAD
2. ROOFING: GALVANIZED STEEL
3. SIDING: GOLD STEEL
4. STRESSES: TIMBERS $f_b = 1300$ p.s.i.
 $f_c = 775$ p.s.i.
SUPPORTS $f_b = 1650$ p.s.i.
GIRTS & PURLINS
 $f_b = 1100$ p.s.i.
5. ALL EXIT DOORS TO HAVE TYPE "B" HARDWARE
6. NAILS @ STRUCTURAL MEMBERS SHALL BE CASE HARDENED
7. METAL SIDING TO BE GROUNDED WITH 4' COPPER ROD AND LABGED SECURELY TO SIDING.
8. DESIGN SOIL CAPACITY = 3000 p.s.i.
9. FIRE EXTINGUISHERS SHALL BE MINIMUM 4 BC CARBON DIOXIDE.



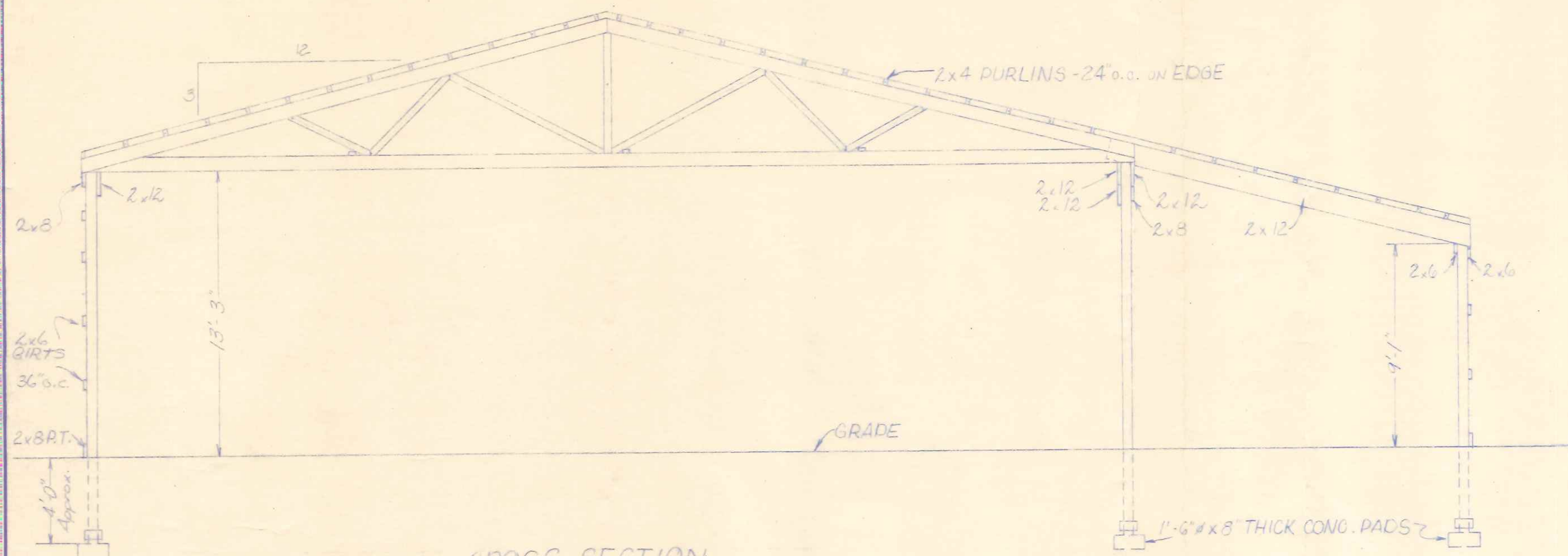
1410 Scott St.



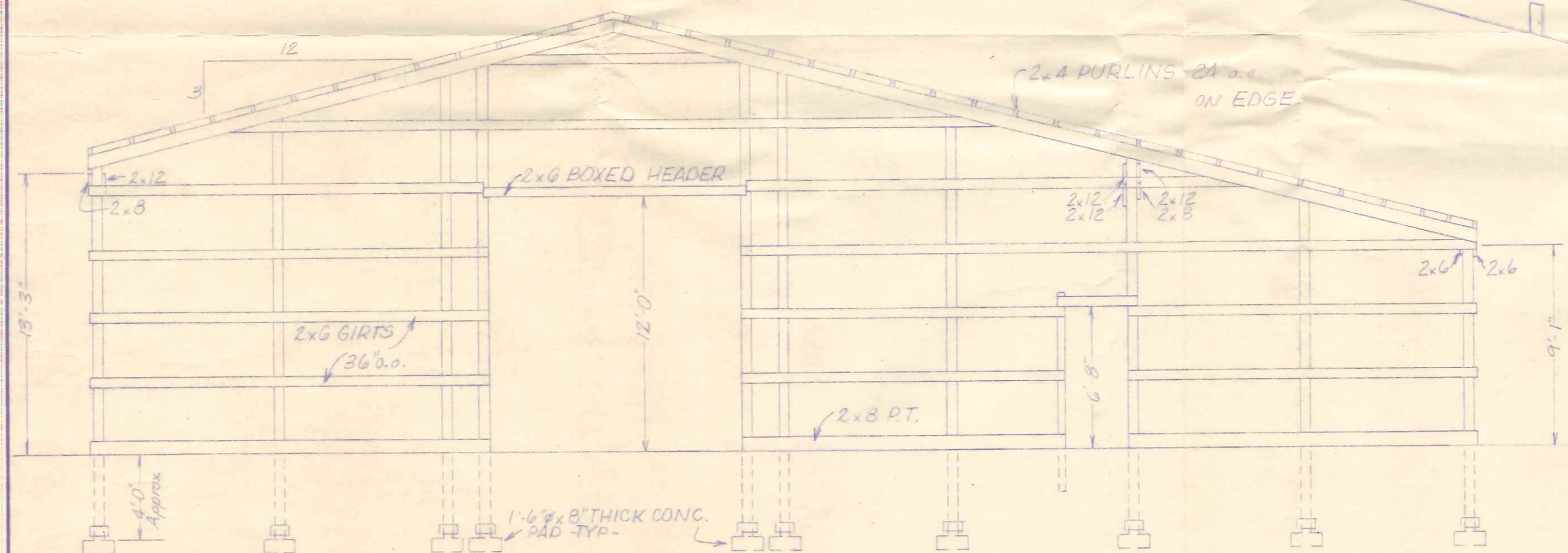
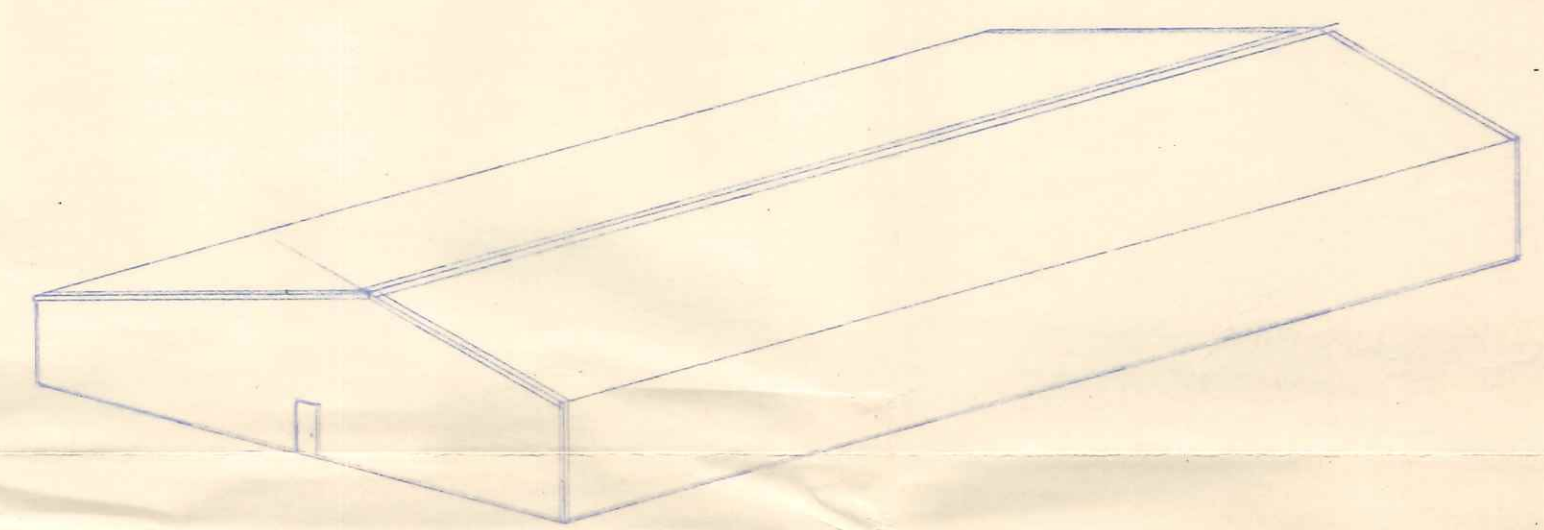
Wickes Buildings
A DIVISION OF THE WICKES CORPORATION

66 x 125'-4" WAREHOUSE
FOR
MERLE FRANZ & DR. J.H. GLICK
NAPOLEON, OHIO

APPROVED BY: <i>[Signature]</i>	REVISED:	DRAWN BY: E. RICHER	JOB NO. 73210
DATE: 10-9-73	REVISED:	SCALE: VARIES	SHEET 1 OF 2



CROSS SECTION



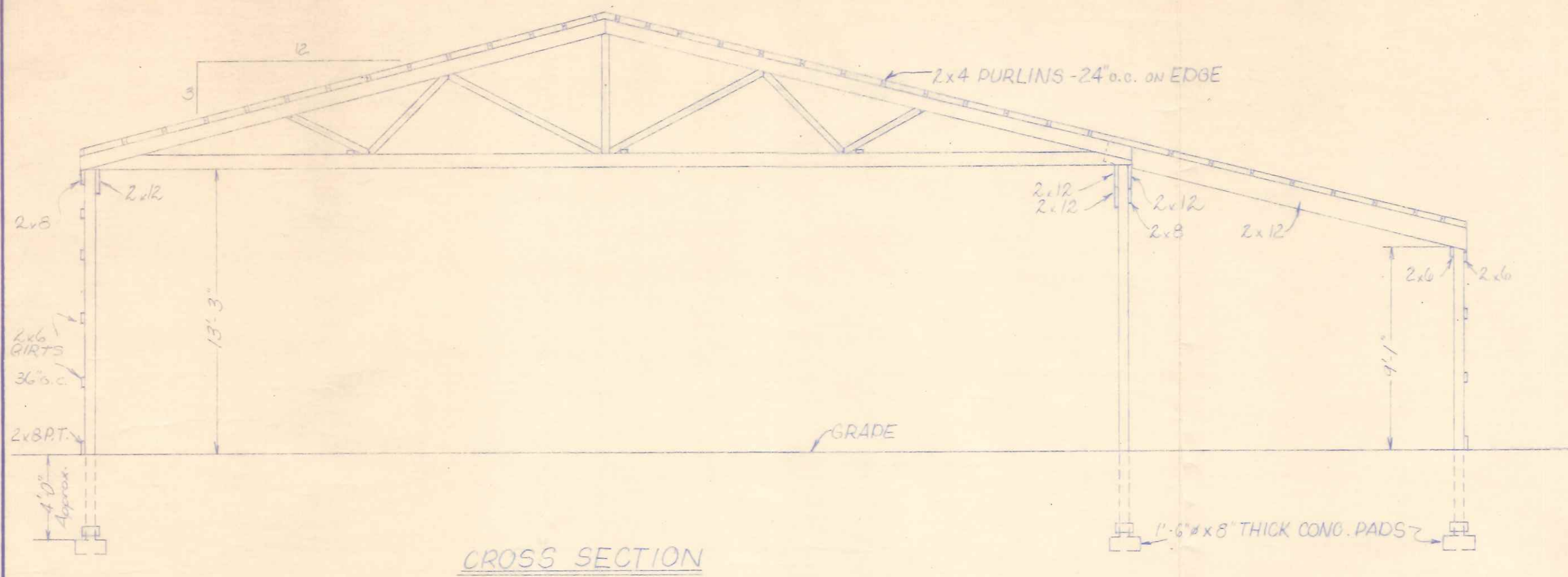
END FRAMING ELEVATION



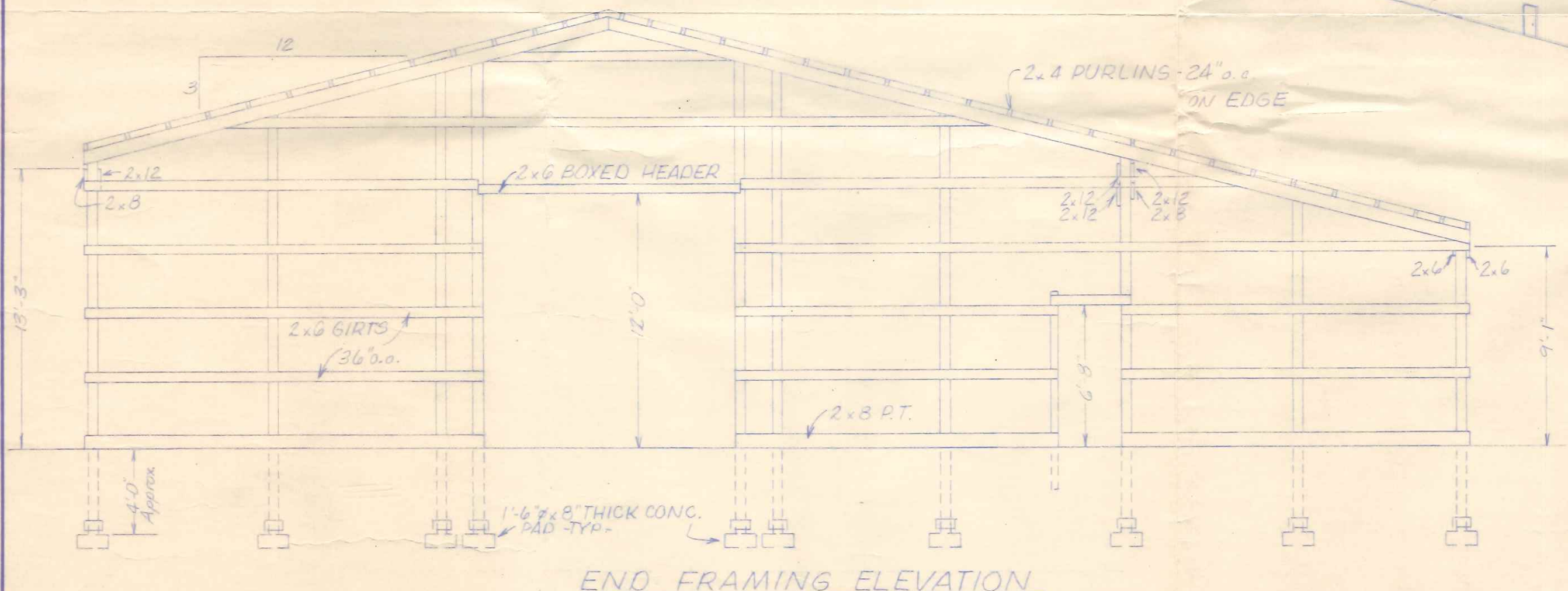
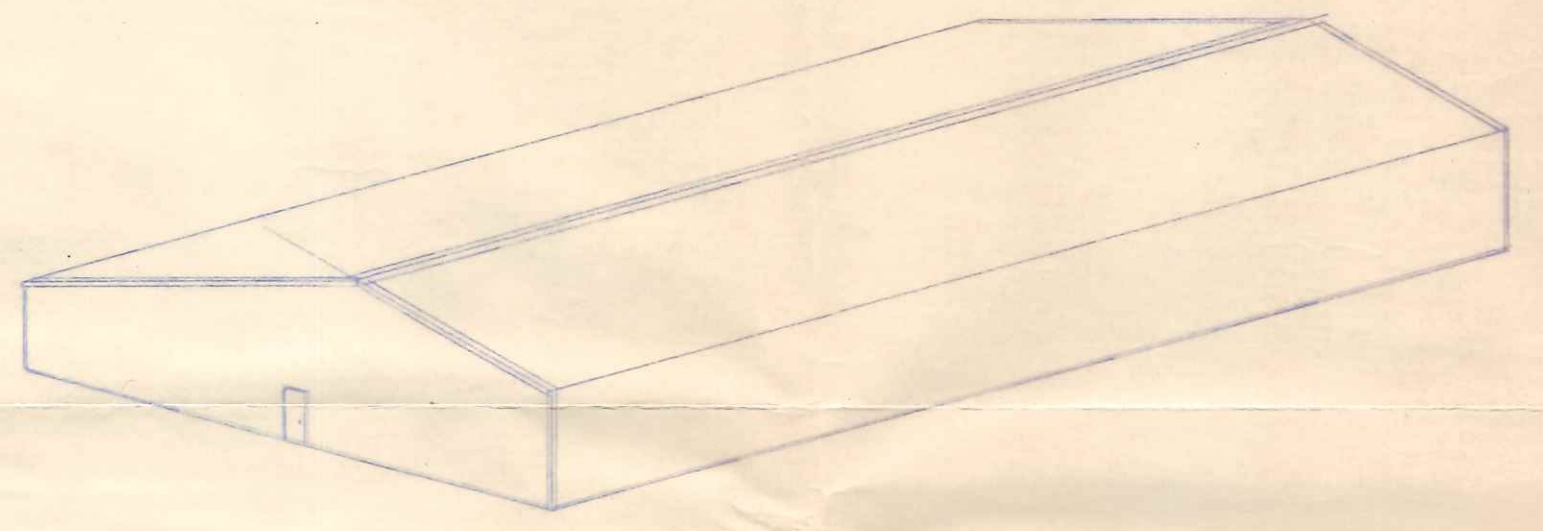
W Wickes Buildings
A DIVISION OF THE WICKES CORPORATION

66 x 125'-4" WAREHOUSE
FOR
MERLE FRANZ & DR. J.H. GLICK
NAPOLEON,
OHIO

APPROVED BY: <i>[Signature]</i>	REVISD:	DRAWN BY: ERICHER	JOB NO. 73210
DATE: 10-9-73	REVISD:	SCALE: VARIES	SHEET 2 OF 2



CROSS SECTION



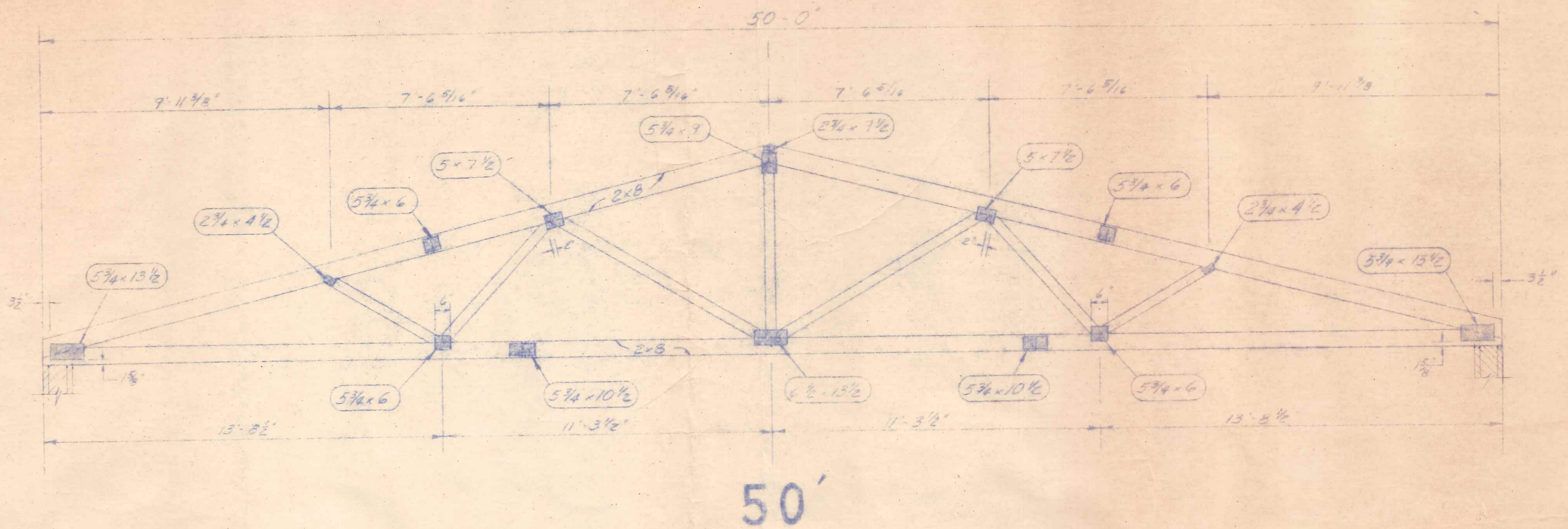
END FRAMING ELEVATION



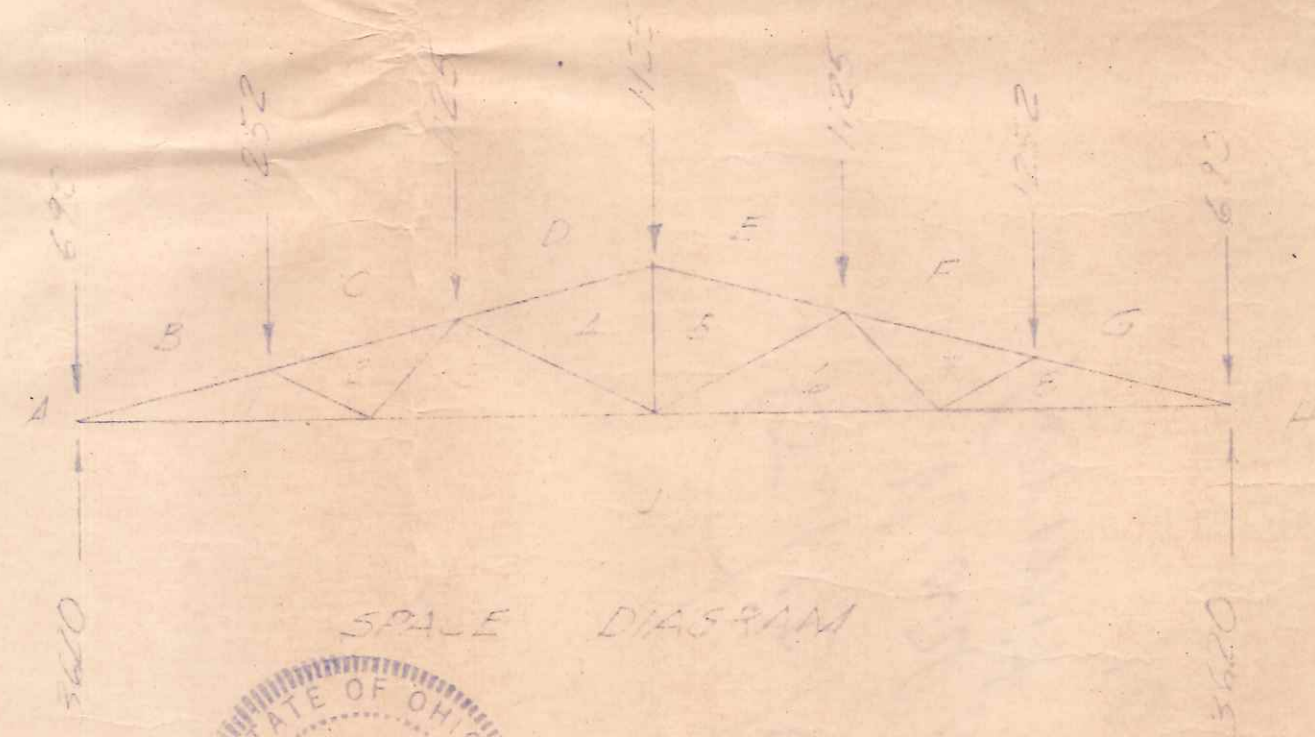
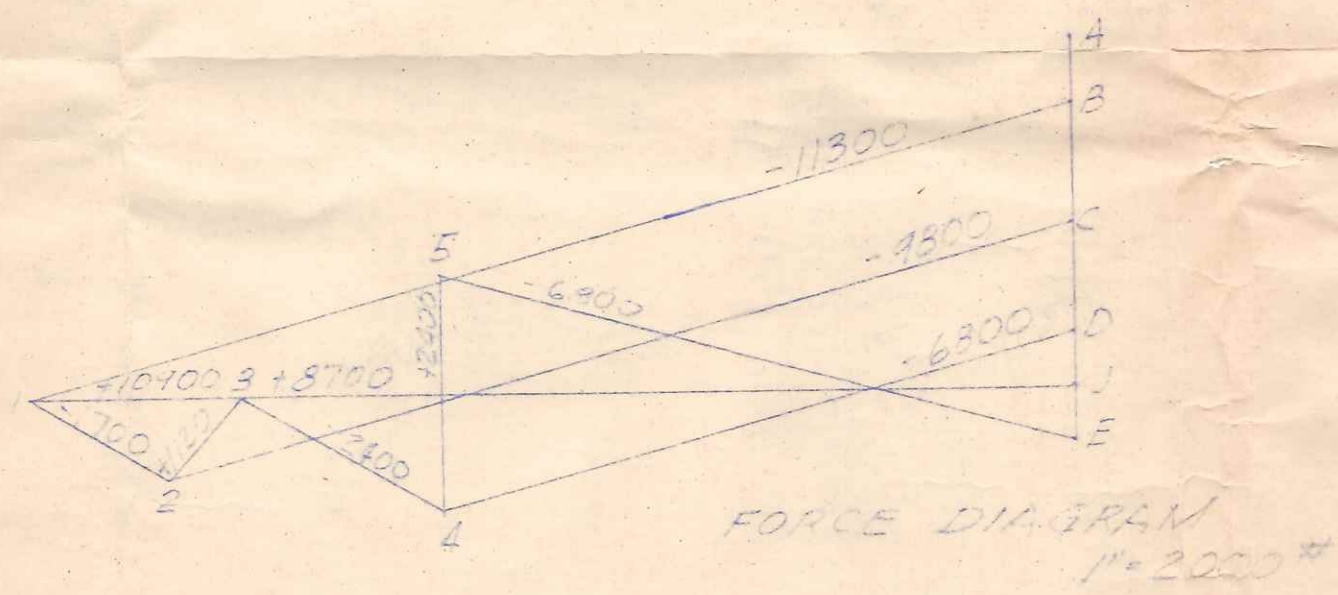
Wickes Buildings
A DIVISION OF THE WICKES CORPORATION

66 x 125'-4" WAREHOUSE
FOR
MERLE FRANZ & DR. J.H. GLICK
NAPOLEON,
OHIO

APPROVED BY: <i>[Signature]</i>	REVISD:	DRAWN BY: ERICHER	JOB NO. 73210
DATE: 10-9-73	REVISD:	SCALE: VARIES	SHEET 2 OF 2



50'



LUMBER

Top chord 2x8 #1KD So. Pine 3" x 450 psi
 Bottom chord 2x8 #1KD So. Pine 3" x 450 psi
 Web 2x4 #2KD N.G.S. Pine or better 4" x 1450 psi

Cut all members to bear

CONNECTOR PLATES

HYDRO-NAIL H heavy Data 16 ga. or 16000 or 98" 115-7

Plates shall be placed on both sides of truss joints and centered unless otherwise noted.

Designed in accordance with the latest revisions of National Lumber Specifications for Stress Grade Lumber and its Fastenings T & M, A and the latest revisions of "Design Specifications for Light Metal Plated Connected Wood Trusses" T.F.I.

DESIGN LOAD
 LIVE = 30 p.s.f.
 DEAD = 5 p.s.f.
 TOTAL = 35 P.S.F.
 SPACING = 5'-4" o.c.

EQUIVALENT LOAD @ 5'-4" o.c.
 Top Chord Live 25 P.S.F.
 Dead 4.3 P.S.F.
 Bottom Chord 0 P.S.F.
 TOTAL 29.3 P.S.F.



APPROVED BY G. J. E. DATE REVIS	DRAWN BY G. J. E. SCALE 50' 0" max	JOB NO. SHEET OF
--	---	---------------------